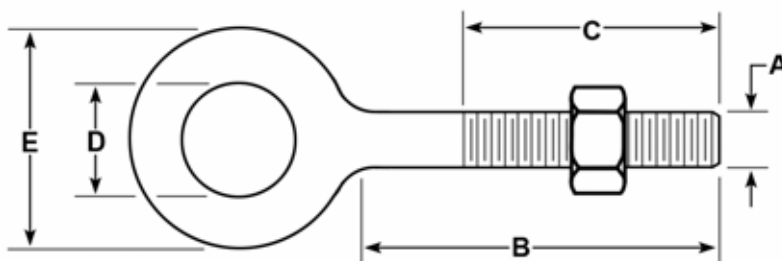




REGULAR PATTERN EYE BOLT WITH HEAVY HEX NUT

CAUTION: NEVER EXCEED THE WORKING LOAD LIMIT.

Never insert the point of a hook in an eyebolt. Always use a shackle.
Read important warnings in T.O.C. > EYE BOLTS ⚠
and GENERAL WARNINGS.



Straight shank, forged carbon steel, heat treated, hot galvanized. Heavy hex nut according to ASME/ANSI B18.2.2.

Size Diameter x Shank A B	Working Load Limit in Pounds*	Approx. Weight each in Pounds	Dimensions in Inches		
			C	D	E
1/4" x 2"	650	.06	1.50	.50	1.00
1/4" x 4"	650	.10	2.50	.50	1.00
5/16" x 2.1/4"	1,200	.13	1.50	.63	1.25
5/16" x 4.1/4"	1,200	.17	2.50	.63	1.25
3/8" x 2.1/2"	1,500	.22	1.50	.75	1.50
3/8" x 4.1/2"	1,500	.28	2.50	.75	1.50
3/8" x 6"	1,500	.33	2.50	.75	1.50
1/2" x 2"	2,600	.46	1.50	1.00	2.00
1/2" x 3.1/4"	2,600	.54	1.50	1.00	2.00
1/2" x 6"	2,600	.68	3.00	1.00	2.00
1/2" x 8"	2,600	.80	3.00	1.00	2.00
1/2" x 10"	2,600	.93	3.00	1.00	2.00
1/2" x 15"	2,600	1.23	5.00	1.00	2.00
5/8" x 4"	5,200	1.00	2.00	1.25	2.50
5/8" x 6"	5,200	1.14	3.00	1.25	2.50
5/8" x 8"	5,200	1.38	3.00	1.25	2.50
5/8" x 10"	5,200	1.55	3.00	1.25	2.50
5/8" x 12"	5,200	1.69	4.00	1.25	2.50
3/4" x 4.1/2"	7,200	1.64	2.00	1.50	3.00
3/4" x 6"	7,200	1.81	3.00	1.50	3.00
3/4" x 8"	7,200	2.00	3.00	1.50	3.00
3/4" x 10"	7,200	2.30	3.00	1.50	3.00
3/4" x 12"	7,200	2.50	4.00	1.50	3.00
3/4" x 15"	7,200	2.90	5.00	1.50	3.00
1" x 6"	10,000	3.60	3.00	2.00	4.00
1" x 9"	10,000	4.30	4.00	2.00	4.00
1" x 12"	10,000	5.00	4.00	2.00	4.00

*Regular nut eye bolts are designed for straight line pull applications only.

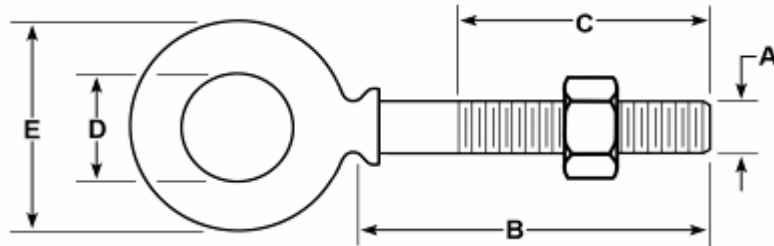
Never apply load at an angle.



SHOULDER PATTERN EYE BOLT WITH HEAVY HEX NUT

CAUTION: NEVER EXCEED THE WORKING LOAD LIMIT.

Read important warnings in T.O.C. > EYE BOLTS ⚠ and GENERAL WARNINGS.



Forged carbon steel, heat treated, hot galvanized. Heavy hex nut according to ASME/ANSI B18.2.2.

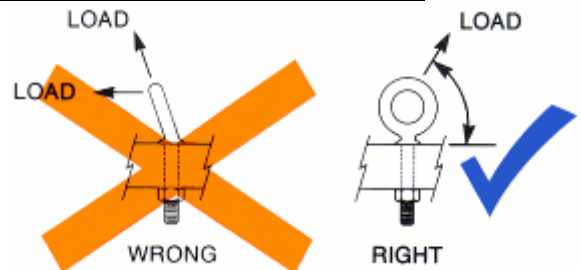
Size Diameter x Shank A B	Working Load Limit in Pounds*	Approx. Weight each in Pounds	Dimensions in Inches		
			C	D	E
1/4" x 2"	650	.06	1.50	.50	.88
1/4" x 4"	650	.09	2.50	.50	.88
5/16" x 2.1/4"	1,200	.11	1.50	.63	1.13
5/16" x 4.1/4"	1,200	.15	2.50	.63	1.13
3/8" x 2.1/2"	1,500	.19	1.50	.75	1.38
3/8" x 4.1/2"	1,500	.25	2.50	.75	1.38
1/2" x 3.1/4"	2,600	.41	1.50	1.00	1.75
1/2" x 6"	2,600	.59	3.00	1.00	1.75
5/8" x 4"	5,200	.83	2.00	1.25	2.25
5/8" x 6"	5,200	1.00	3.00	1.25	2.25
3/4" x 4.1/2"	7,200	1.50	2.00	1.50	2.75
3/4" x 6"	7,200	1.70	3.00	1.50	2.75

Type 316 Stainless Steel, with Stainless heavy hex nut.

Size Diameter x Shank A B	Working Load Limit in Pounds*	Approx. Weight each in Pounds	Dimensions in Inches		
			C	D	E
1/4" x 2"	500	.08	1.50	.50	.88
1/4" x 4"	500	.10	2.50	.50	.88
5/16" x 2.1/4"	780	.11	1.50	.63	1.13
5/16" x 4.1/4"	780	.14	2.50	.63	1.13
3/8" x 2.1/2"	1,200	.19	1.50	.75	1.38
3/8" x 4.1/2"	1,200	.24	2.50	.75	1.38
1/2" x 3.1/4"	2,150	.42	1.50	1.00	1.75
1/2" x 6"	2,150	.56	3.00	1.00	1.75
5/8" x 4"	3,440	.78	2.00	1.25	2.25

WARNING:

*Working Load Limit applies to straight line pull only. When applying load at an angle the Working Load Limit is drastically reduced. Refer to Standard Rigging Handbook for reductions in Working Load Limit of shoulder pattern eye bolts for angular lifting. Above ratings apply only when the shoulder is in full contact with the mating part of the load and the load is applied in the plane of the eye (see illustration).

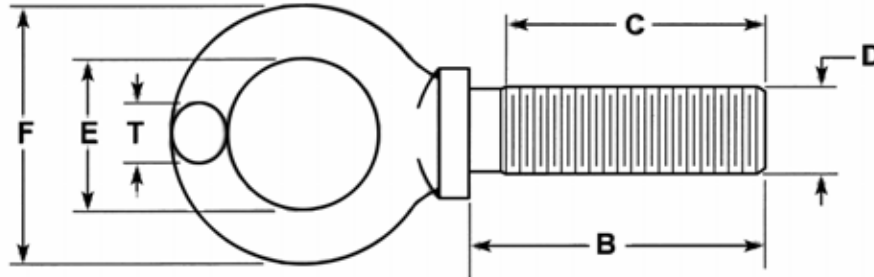




MACHINERY EYE BOLTS—SHOULDER PATTERN

CAUTION: NEVER EXCEED THE WORKING LOAD LIMIT.

Never insert the point of a hook in an eyebolt. Always use a shackle.
Read important warnings in T.O.C. > EYE BOLTS ⚠
and GENERAL WARNINGS.



Forged carbon steel, quenched and tempered, self-colored. Dimensions according to ANSI/ASME B18.15, Type 2, Style A. Manufactured in accordance with A.S.T.M. A489. Rated capacities meet or exceed the requirements of ANSI/ASME 18.15 for Type 2, Style A.

Size Diameter x Shank D B	Working Load Limit in Pounds*	Approx. Weight each in Pounds	Dimensions in Inches			
			C	E	F	T
1/4" x 1"	500	.06	.75	.69	1.19	.19
5/16" x 1.1/8"	900	.10	.81	.81	1.44	.25
3/8" x 1.1/4"	1,400	.16	.88	.94	1.69	.31
7/16" x 1.3/8"	2,000	.21	1.00	1.00	1.81	.34
1/2" x 1.1/2"	2,600	.38	1.12	1.12	2.12	.44
9/16" x 1.5/8"	3,000	.73	1.25	1.19	2.25	.47
5/8" x 1.3/4"	4,000	.73	1.38	1.31	2.56	.56
3/4" x 2"	6,000	1.04	1.62	1.44	2.81	.62
7/8" x 2.1/4"	7,000	1.61	1.81	1.56	3.19	.75
1" x 2.1/2"	9,000	2.31	2.06	1.69	3.56	.88

* WARNING: Working Load Limit applies to straight line pull only. When applying load at an angle, the Working Load Limit is drastically reduced. Refer to Standard Rigging Handbook for reductions in Working Load Limit of shoulder pattern eyebolts for angular lifting. Above ratings apply only when the shoulder of the eyebolt is in full contact and properly seated with the mating part of the load and the load is applied in the plane of the eye (see illustration).

