



GRADE 100 ALLOY FITTINGS

CAUTION: NEVER EXCEED THE WORKING LOAD LIMIT.

Read important warnings and information in T.O.C. > GENERAL WARNINGS and LINKS ⚠️.

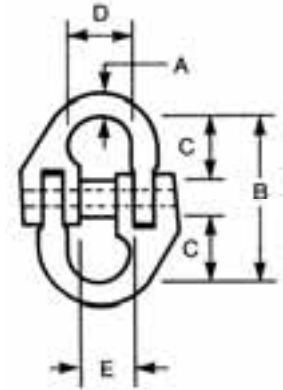
GRADE 100 COUPLING LINK

Forged alloy steel, heat treated. Meets the performance requirements of ASTM A952

Size	Working Load Limit in Pounds	Approximate Weight Each in Pounds	Dimensions in Inches				
			A	B	C	D	E
9/32"	4,300	0.31	0.41	2.05	0.79	0.75	0.63
5/16"	5,700	0.44	0.47	2.44	0.98	0.91	0.71
3/8"	8,800	0.77	0.47	2.76	1.18	1.06	0.91
1/2"	15,000	1.63	0.79	3.54	1.42	1.34	1.06
5/8"	22,600	2.56	0.87	4.13	1.57	1.54	1.30
3/4"	35,300	4.52	1.14	4.45	1.81	1.81	1.65
7/8"	42,700	6.83	1.18	5.24	2.17	2.28	1.93
1"	59,700*	14.99	1.57	7.56	3.35	3.25	2.24

* Not covered by ASTM A952

- To assemble:
1. Put two halves of coupling link together as shown.
 2. Put locking spacer between halves, line up with holes in coupling link.
 3. Drive pin through holes in coupling link and locking spacer until flush with outside of coupling link.

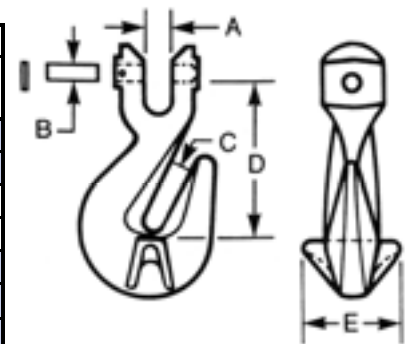


GRADE 100 CLEVIS GRAB HOOK, CRADLE TYPE

Forged alloy steel, heat treated. Painted. Meets the performance requirements of ASTM A952

Size	Working Load Limit in Pounds	Approximate Weight Each in Pounds	Dimensions in Inches				
			A	B	C	D	E
9/32"	4,300	0.97	0.39	0.35 x 0.89	0.39	2.58	1.18
5/16"	5,700	0.97	0.39	0.39 x 0.91	0.39	2.56	1.18
3/8"	8,800	2.12	0.51	0.51 x 1.24	0.51	3.15	1.34
1/2"	15,000	4.63	0.67	0.63 x 1.65	0.67	4.15	1.85
5/8"	22,600	7.50	0.75	0.83 x 2.03	0.75	4.40	2.52
3/4"	35,300	11.46	0.91	1.02 x 2.83	0.93	4.65	3.31
7/8"	42,700	18.72	1.03	1.02 x 2.83	1.08	5.88	3.47

- To assemble:
1. Fully insert clevis pin.
 2. Secure clevis pin by driving locking pin into place until flush with body of hook.



GRADE 100 CLEVIS SLING HOOK — WITH LATCH

Forged alloy steel, heat treated. Painted. Meets the performance requirements of ASTM A952

Size	Working Load Limit in Pounds	Approximate Weight Each in Pounds	Dimensions in Inches			
			A	B	C	D
9/32"	4,300	1.21	0.37	0.35 x 0.89	1.02	3.74
5/16"	5,700	1.10	0.37	0.39 x 0.89	1.02	3.74
3/8"	8,800	2.20	0.47	0.51 x 1.16	1.22	4.33
1/2"	15,000	3.75	0.59	0.63 x 1.46	1.57	5.35
5/8"	22,600	7.05	0.71	0.79 x 2.05	1.77	6.10
3/4"	35,300	11.02	0.91	0.94 x 2.87	2.09	7.28
7/8"	42,700	20.36	1.00	1.02 x 2.83	2.90	8.25

- To assemble:
1. Fully insert clevis pin.
 2. Secure clevis pin by driving locking pin into place until flush with body of hook.

